

Dinghy Cover Measurement Form

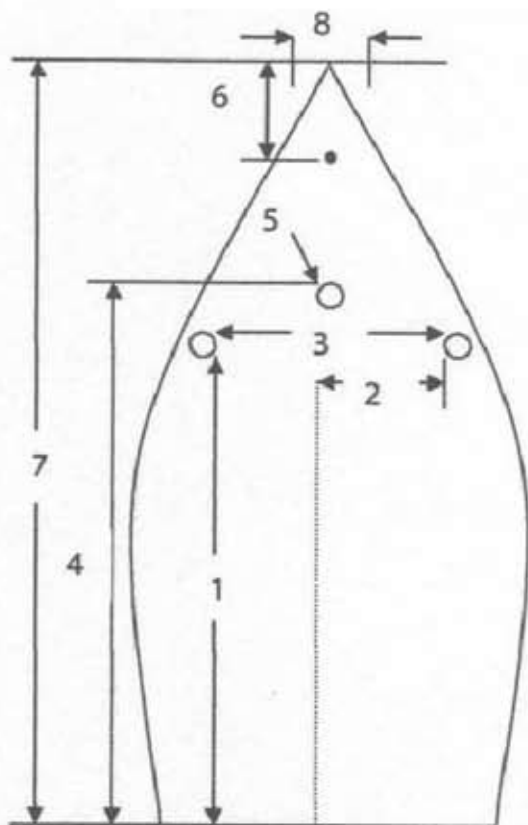


Rowsell Sails

24 Camperdown Terrace, Exmouth
Devon, EX8 1EH

01395 263911

info@rowsellsails.co.uk

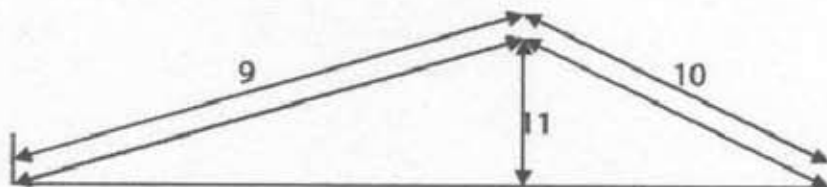


For Boom Up Covers

- 9. Transom to back of mast with boom up
- 10. Bow to front of mast with boom in position
- 11. height from top of boom to shearline
- 12. diameter of mast

Starting with the transom show
Width of boat at 300mm intervals

- Transom
- Width
- 300mm
 - 600mm
 - 900mm
 - 1200mm
 - 1500mm
 - 1800mm
 - 2100mm
 - 2400mm
 - 2700mm
 - 3000mm
 - 3300mm
 - 3600mm
 - 3900mm
 - 4200mm
 - 4500mm
 - 4800mm
 - 5100mm
 - 5400mm
 - 5700mm



- 1. Transom to shroud
- 2. Distance inboard to shroud
- 3. Shroud to shroud
- 4. Transom to rear of mast
- 5. Shearline to top of boom (when fixed to gooseneck)
- 6. forestay to bow
- 7. Overall length
- 8. Width at bow

Dinghy Type

- Please tick
- Trailing- Please Tick Acrylic-
- Flat- Polyester-
- Boom Up:

Name _____

Address _____

Post code _____

Tel _____

Mob _____